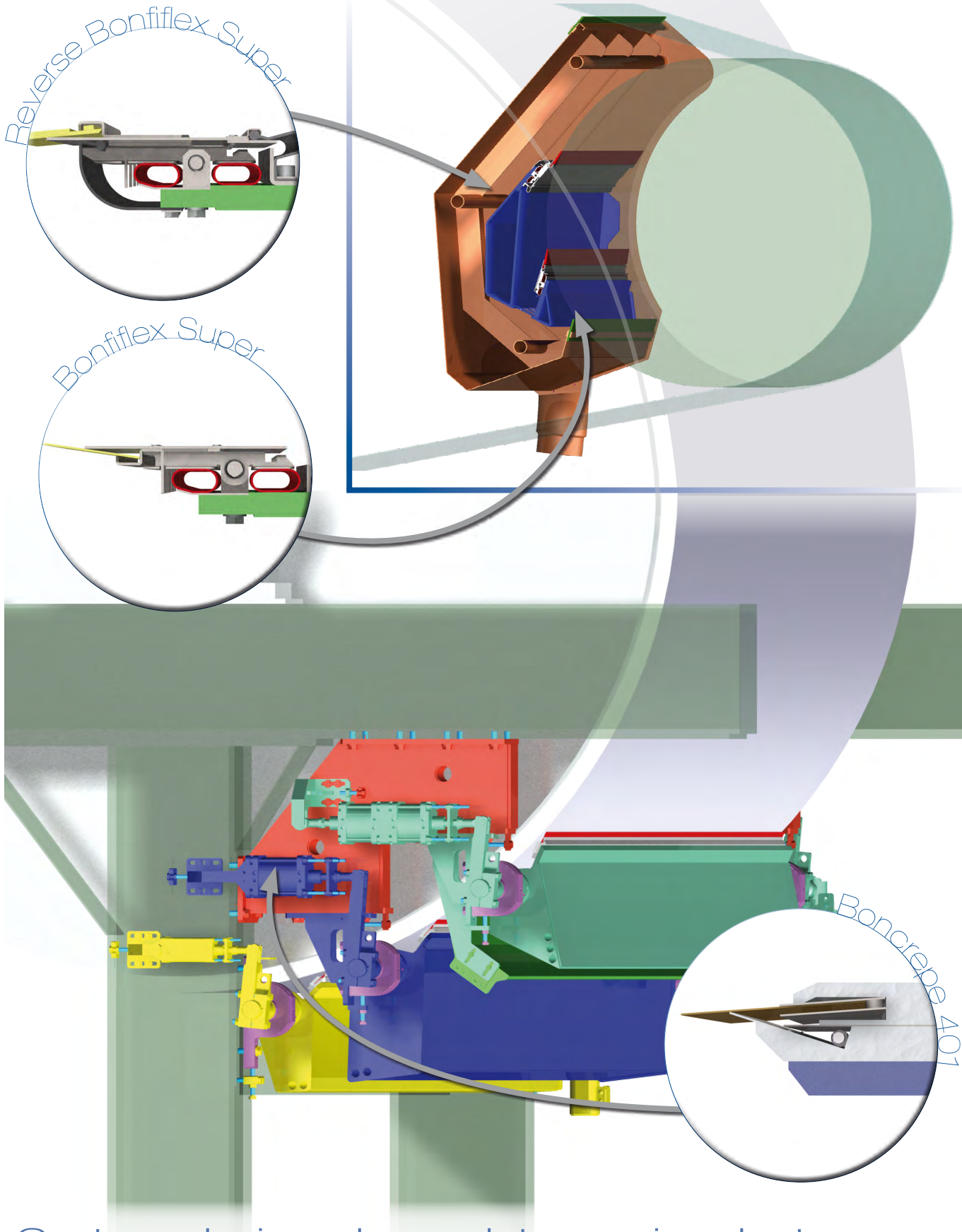


Creping doctors



Custom-designed save-all
and doctor assemblies
for suction presses

DOCTORING SYSTEMS



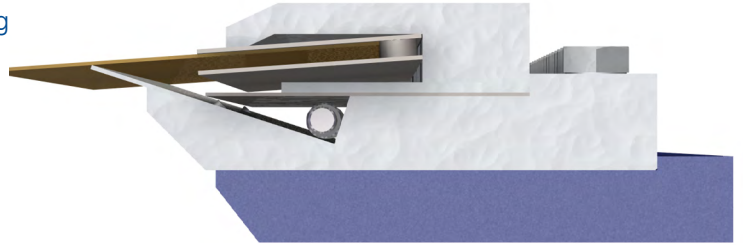
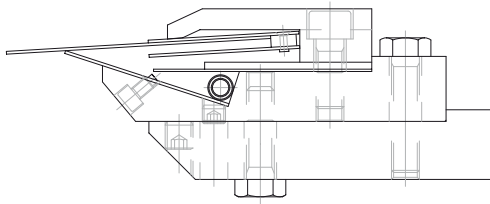
Custom-designed complete creping doctor
assemblies for Yankee dryers.

BONCREPE 401

Heavy duty semi-rigid holder,

- open design reduces dust accumulation
- robust design for high load application
- cartridge design allows rapid blade changing
- all stainless steel construction

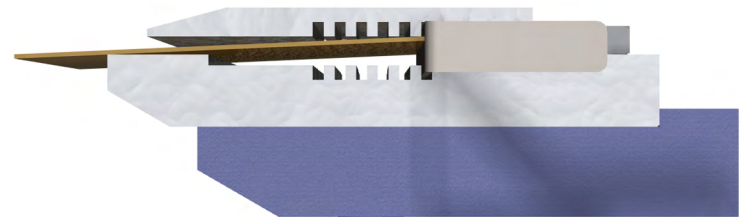
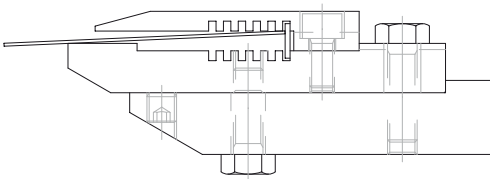
Applications: Tissue Creping, Cleaning and Cut-Off Positions



BONCREPE 131

Rigid holder for Yankee cylinders. "Ladder" slots allow various blade widths. All stainless steel construction.

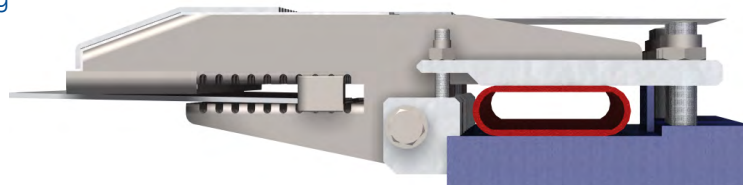
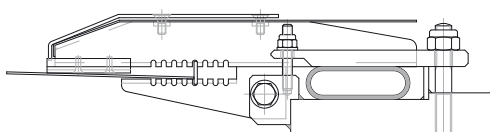
Applications: Tissue Creping, Cleaning and Cut-Off Positions



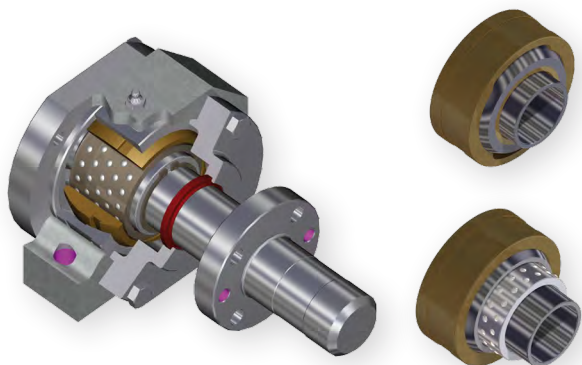
BONAIRCREPE 134

Self-conforming tube loaded blade holder, blade conforms automatically to roll crown. All stainless steel construction.

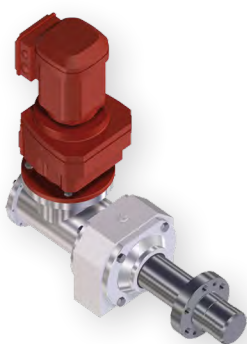
Applications: Tissue Creping, Cleaning and Cut-Off Positions



Bearings



Oscillators



Electromechanical



Hydraulic



Pneumatic

Pressure tube

BON 100
up to 100°C



For Bonetti creping blades please
refer to related brochure

Established in 1923 Bonetti has been successfully supplying the pulp and paper industry since more than 50 years. The renowned reliability and quality of coater blades gave rise to the first requests for doctor and creping steel blades in the late 1960's. Synthetic-material doctor blades became available in the 1980's. Challenged by ever-changing doctoring technology, Bonetti has then successfully developed "hi-tech" materials to meet specific Customer needs. In the mid-1990's Doctoring and Creping Systems were a natural addition to the Bonetti Product lines. High-quality Doctor Holders, Systems and Spare Parts, with innovative design



features have since been manufactured and installed throughout the world. To meet worldwide product demands, four (4) new manufacturing facilities were inaugurated in the 1990's and 2000. Sturtevant, WI USA; Hagen, Germany; Cantalupo, Italy; Trois-Rivieres, QC Canada; now complement world headquarters in Lainate, near Milan in Italy. Bonetti's success has always been based on a timely response to the needs and demands of the markets it serves. For more than 50 years, and now in the third generation of family ownership, Bonetti has been and will continue to be a global partner of paper mills and paper-machine manufacturers worldwide.

www.bonetti.com

ITALY

BONETTI S.p.A.
C.so Europa, 23
20020 Lainate (MI) - Italy
Phone +39 02 935 741
Fax +39 02 937 1154
bonetti@bonetti.it

ITALY

BONETTI S.p.A.
Via Fratelli Cervi, 53
20023 Cantalupo di Cerro Maggiore (MI) - Italy
Phone +39 0331 534 707
Fax +39 0331 535 183
bonetti@bonetti.it

GERMANY

BONETTI GmbH
Werkzeugstrasse 28
58093 Hagen - Germany
Phone +49 2331 950 850
Fax +49 2331 950 870
info@bonetti.com

U.S.A.

BONETTI CO., Inc.
14100 West Grandview Parkway
Sturtevant, WI 53177 - U.S.A
Phone +001 262 886 4400
Fax +001 262 886 6300
bonetti.steel@bonetti.com

CANADA

BONETTI CANADA Inc.
101, Place Jourdain Trois-Rivières
Québec, G8W 2H3 - Canada
Phone +001 819 694 2322
Fax +001 819 694 9563
bonetti.canada@bonetti.com

CHINA

BONETTI China
Room 301 No. 798 ZhaoJiaBang Rd.
200030 Shanghai
Phone +86 21 54657189
Fax +86 21 64453191
china@bonetti.com